

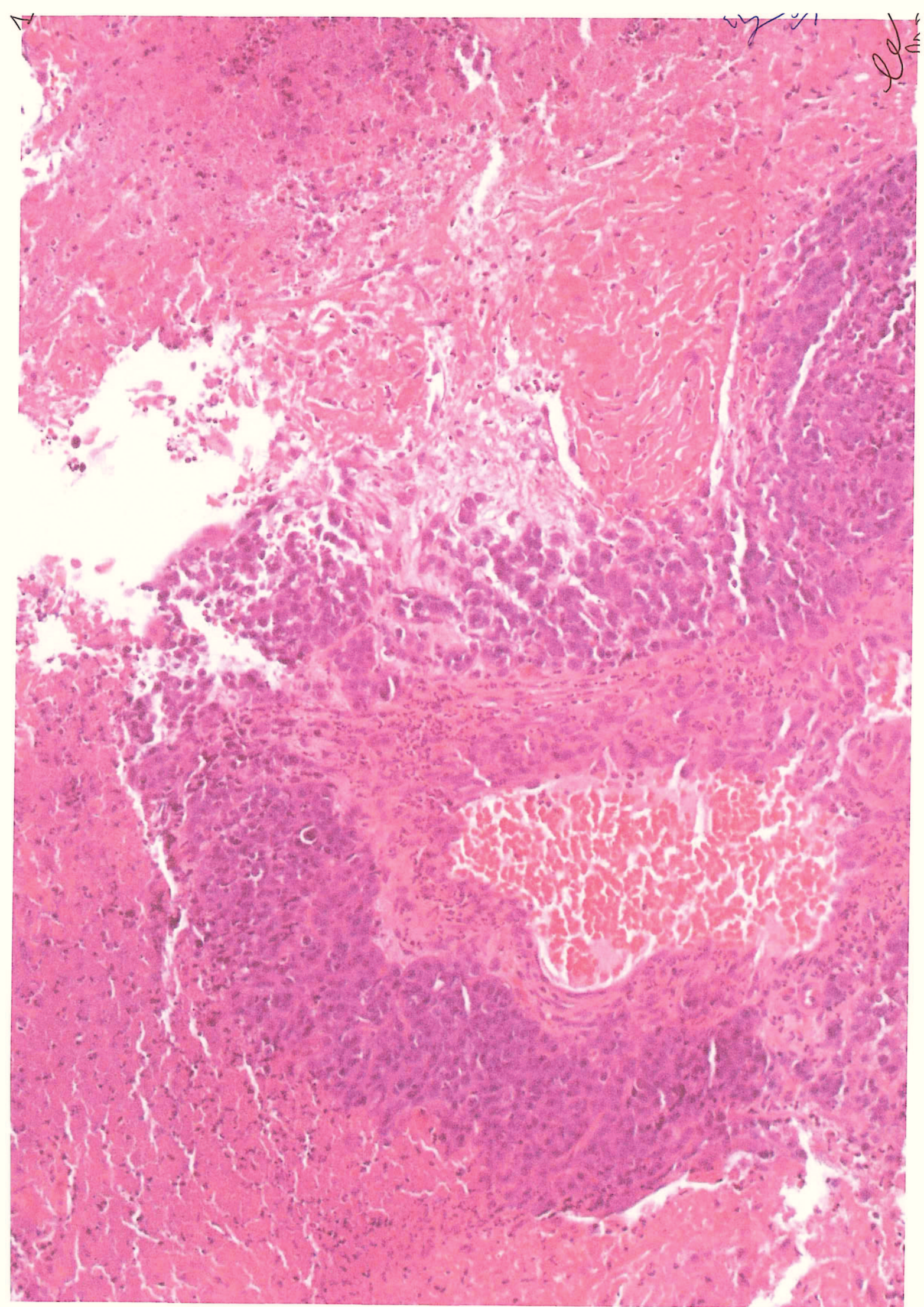
PROVA PRATICA

1) CARCINOMA NUT DEL POLMONE CASO DI REGGIO EMILIA (ALLEGATO)

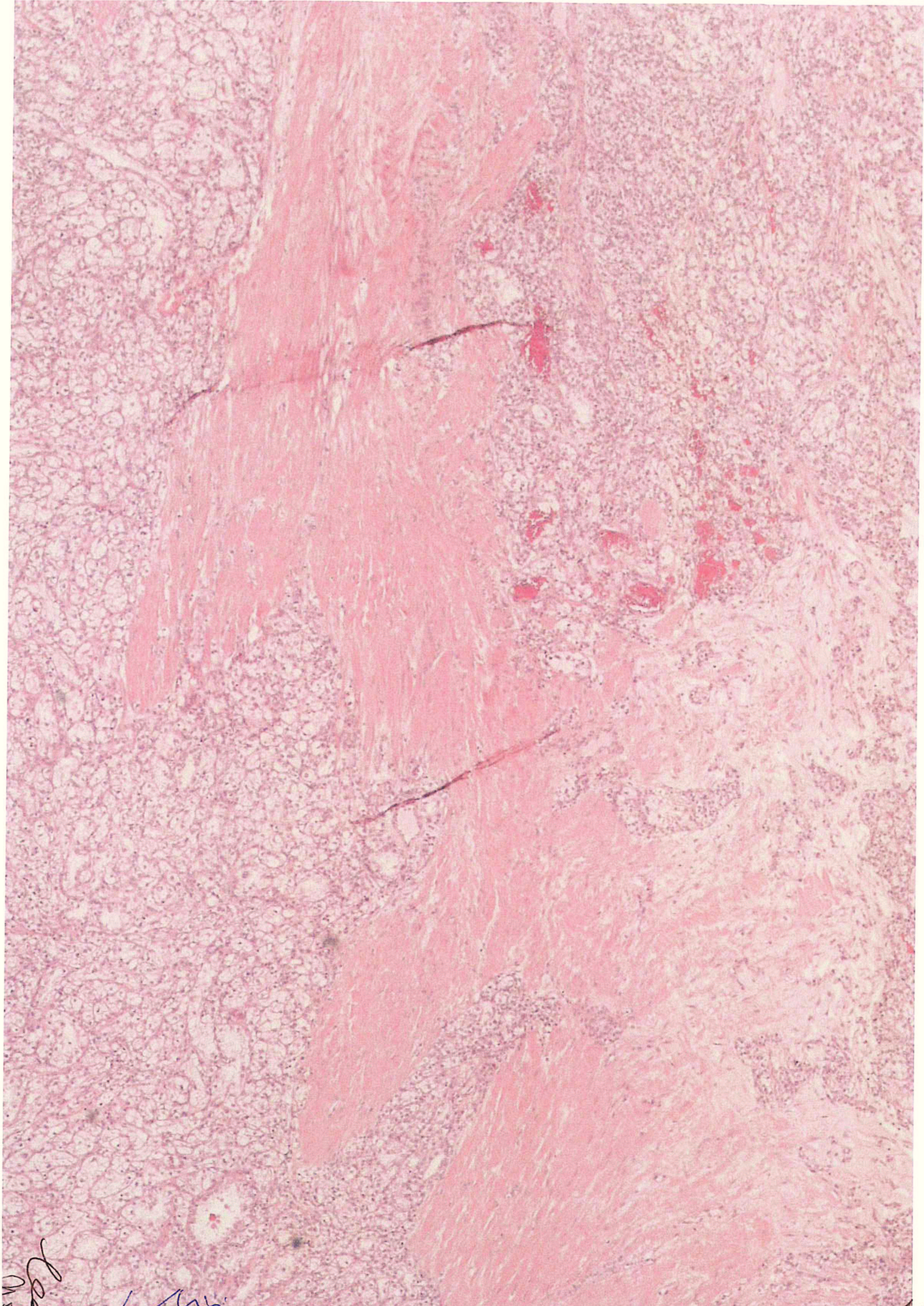
2) 18T015634 CARCINOMA TUBULO-PAPILLARE CON STROMA MUSCOLARE (ALLEGATO)

3) 18T004572 SEMINOMA SPERATOCITICO (ALLEGATO)



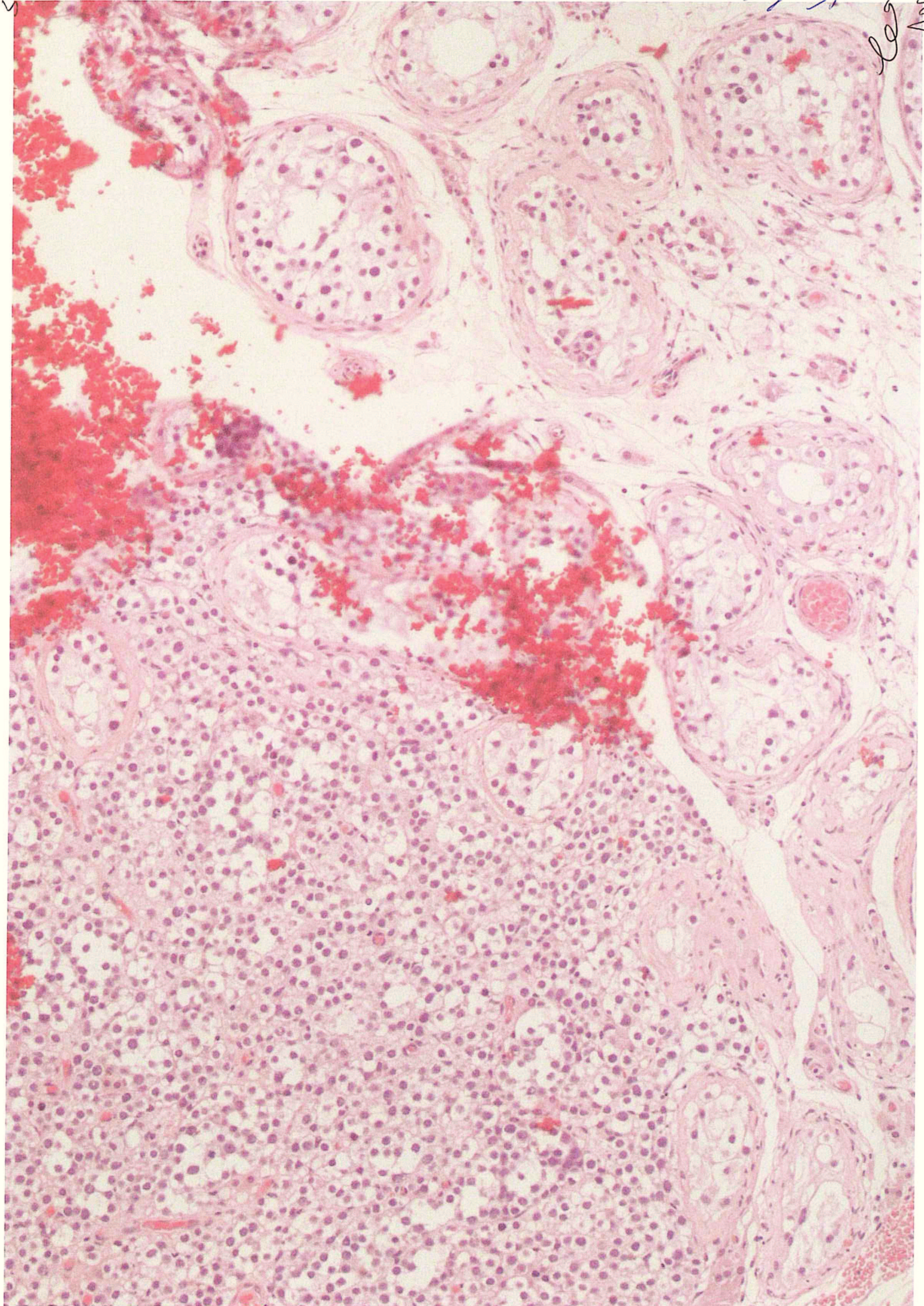






Handwritten notes in the bottom left corner, including the number '100' and a signature.





les  
11